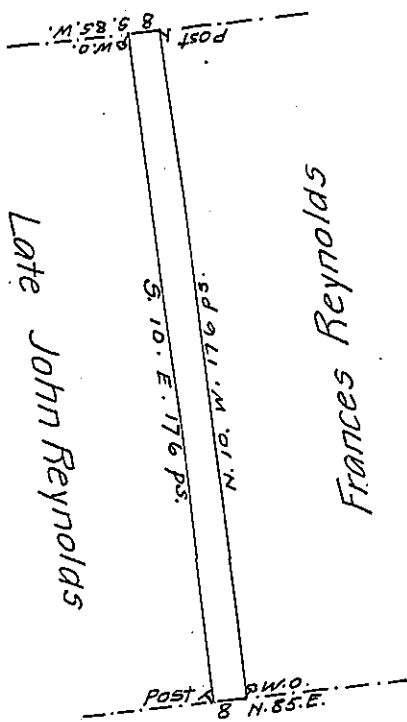


Lawrence Houtz

Fees 2/6 pd.



Jacob Overholtz

By Vertue of an application No. 2390 dated ^{the} 16 day of March 1767
 and Surveyed ^{the} 8 day of June 1768 to John Sneavelly the above discribed
 Tract of Land Situate in Bethel township Lancaster County Containing
 Eight acres and forty Six perches and the allowence of Six pr. Cent.
 pr Jasper Scull

Taken from the feild works
 of John Scull deceased

IN TESTIMONY that the above is a copy of the original remaining on file in
 the Department of Internal Affairs of Pennsylvania, made
 conformably to an Act of Assembly approved the 16th day of
 February, 1833, I have hereunto set my Hand and caused
 the Seal of said Department to be affixed at Harrisburg,
 this second day of November 1906

La a c R. Brown
 Secretary of Internal Affairs.